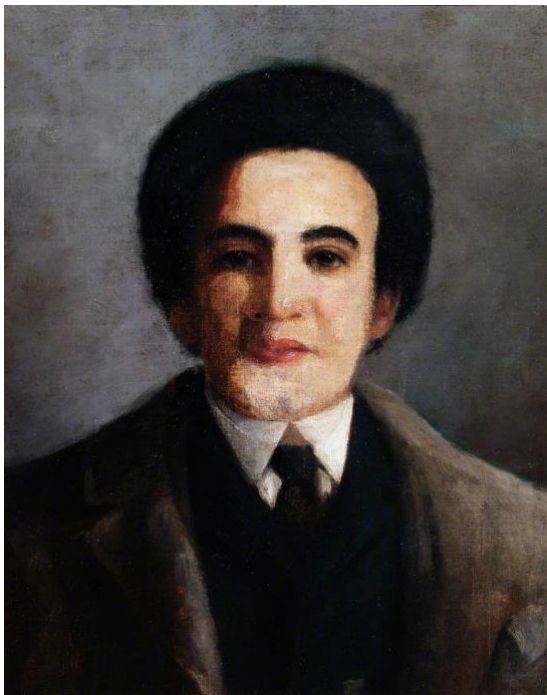


Take a Self-ie Portrait

Self-portraits come in all shapes and sizes – large paintings, realistic sculptures, even selfies taken on your phone!

These self-portraits are from the Museum of Croydon's collection. Both artists used oil paint to create the portraits but they definitely don't look the same!

What is similar between these two portraits? And what is different?



Portrait of Samuel Coleridge Taylor
By Stanmore Gibbs



Portrait of an Edwardian Gentleman
By Bror Kronstrand

Capture your own unique self-portrait in the frame below:

HANDY HINT!

Self-portraits don't just have to be a picture of your face. They can show things that are important to you – family, friends, pets – or even your favourite food, film or sport.



**MUSEUM OF
CROYDON**

